

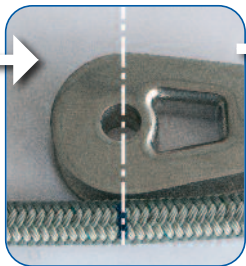
A - Before assembly / Préparation :



1. Thread the torque rope into the two shrinkable thermo-sleeves : the short first and then the bigger.
Enfiler les deux gaines thermorétractables dans le câble anti-torsion : d'abord le petit, puis le grand.

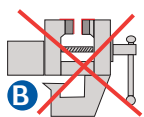
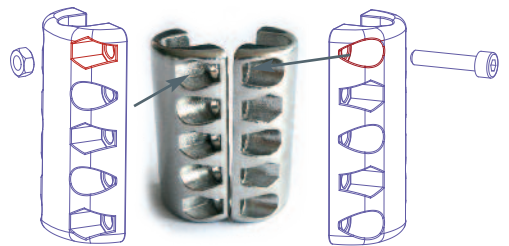
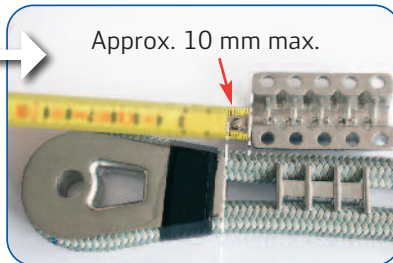
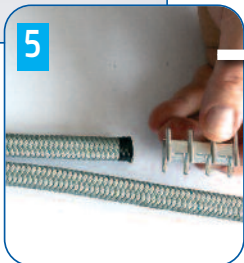
2. Remove the 4 long screws from the cable clamp
Enlever les 4 vis longues du serre-câble

3. Put the anti-twist rope around the thimble.
Positionner le câble anti-torsion autour de la cosse.

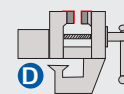


Ø9.5 : 21-23cm with Facnor thimbles*
avec cosses Facnor
Ø11 : 21-23cm
Ø13 : 23-25cm
Ø16 : 25-27cm

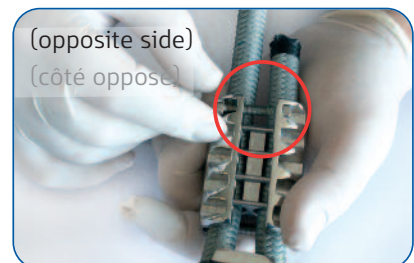
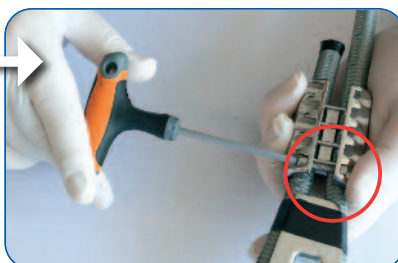
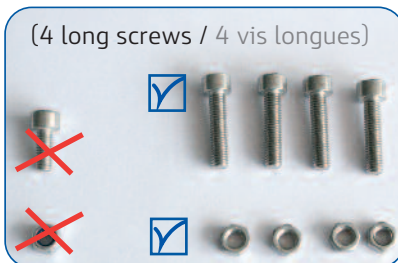
* These values may change according to thimble
Ces valeurs peuvent changer suivant le type de cosse



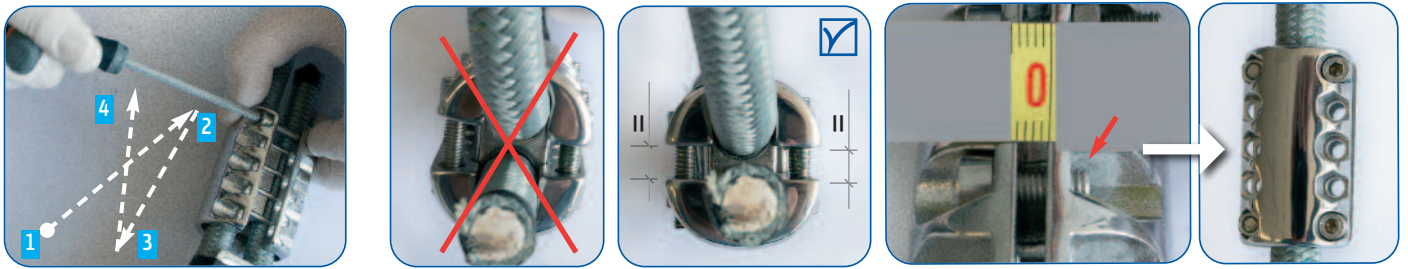
B - Clamp positioning without a vice
Approche du serre-câble sans étau



→ **With a vice : see § D**
Avec un étau : voir § D

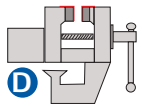
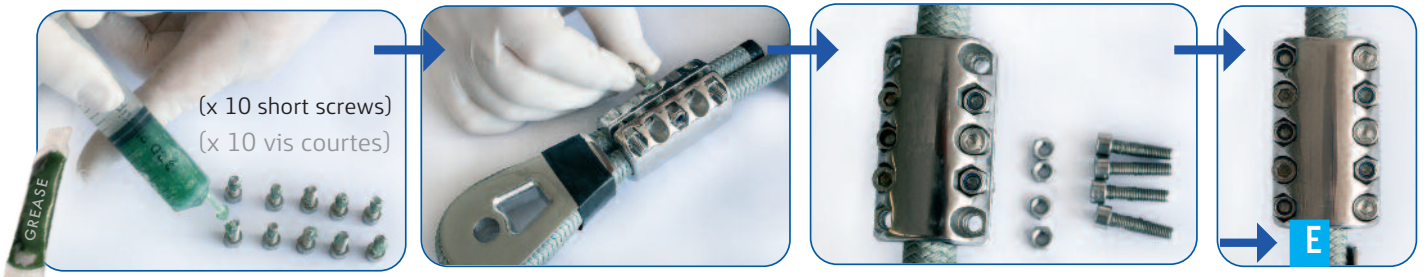


(...) Fitting of the clamp on the torque rope / Installation du serre-câble sur le câble anti-torsion :



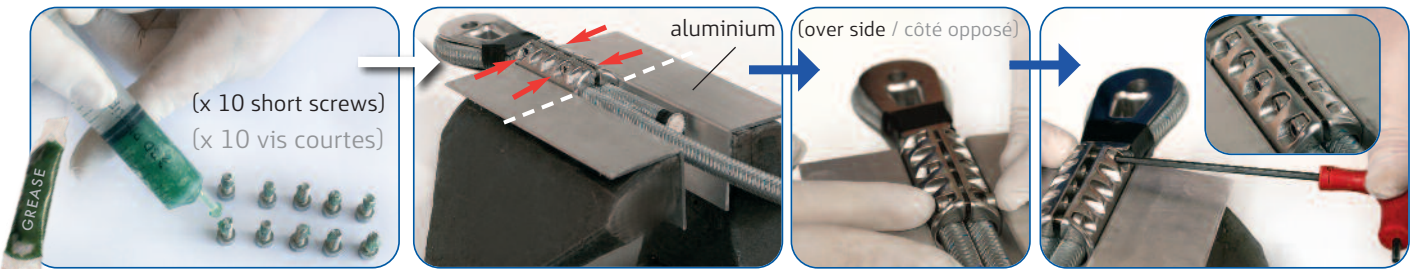
Tighten progressively the screws as indicated above / Procéder en croix pour uniformiser le serrage

C - Complete clamp installation / installation définitive du serre-câble :



D - With a vice / avec un étau

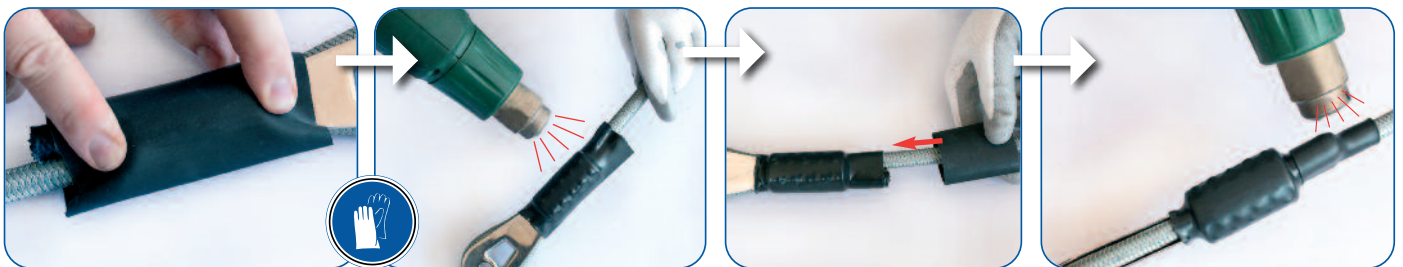
In this case you don't need to use the long screws / Dans ce cas, vous n'avez pas besoin des vis longues



E - Tightening / Serrage final



F - Final fitting (Shrinkable thermo-sleeve) / Finition (gaine thermo-rétractable) :



NEWS
& JOIN US ON



See our
channel

