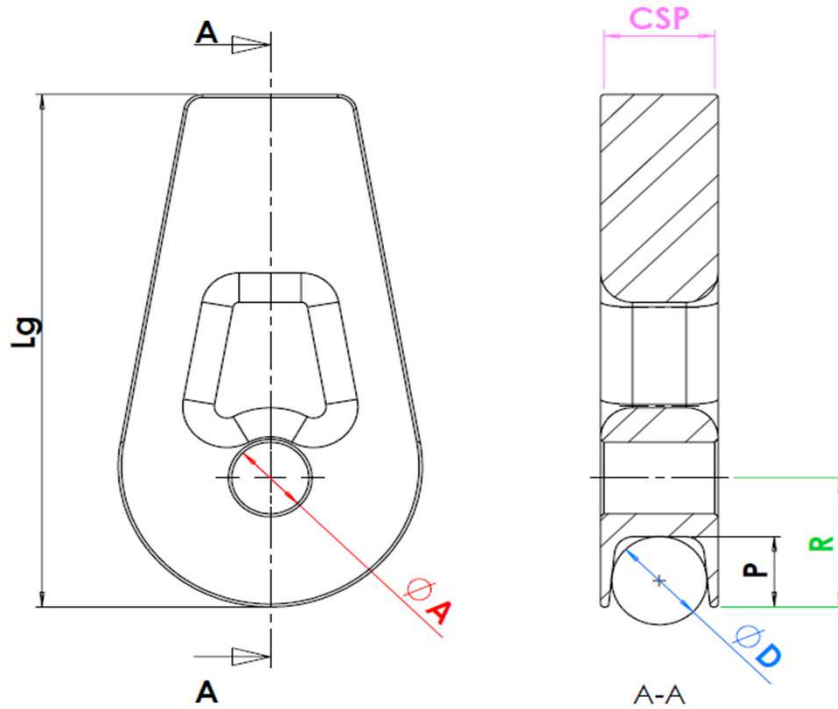


DIMENSIONS DES COSSES INOX & ALUMINIUM - STAINLESS STEEL & ALUMINIUM THIMBLE DIMENSIONS



FURLER	COSSE INOX / FCI SS THIMBLE / FCI			COSSE ALU / FCA ALU THIMBLE / FCA				
	FX 1500 FX+1500	FX 2500 FX+2500	FX 4500 FX+4500	FX 7000 FX+7000	FX 12 000 FX+ 12 000 FXH 12 000 Standard	FX+ 12 000 FXH 12 000 Racing	FX 20 000	FX+ 20 000
Designation	FCI 1500 ATD11 PIND08	FCI 2500 ATD13 PIND10	FCI 4500 ATD15 PIND12	FCA 07000 ATD22 PIND14	FCA 12000 ATD22 PIND16	FCA 12000 ATD16 PIND18	FCA 20000 ATD24 PIND20	FCA 20000 ATD24 PIND29
Reference	25200010110	25200010112	25200010114	43130237030	43130231220	43130231230	43130232020	43130232030
Ø A	8	10	12	14	16	18	20	29
CSP	14,5	17	18,5	25	25	21	28	30
R	15	18,5	22	35	35	35	41	41
mini Ø D max	11	13	15	16 18 22	16 18 22	16 -- 16	20 22 24	20 22 24
P	8	10	12	14	14	16	14	14
Lg	64	76	88	140	140	140	150	150
Lr	34	41	48	69	69	69	85	85
G	8	10	12	18	18	18	18	18

Les dimensions sont en mm. / Dimensions are in mm.