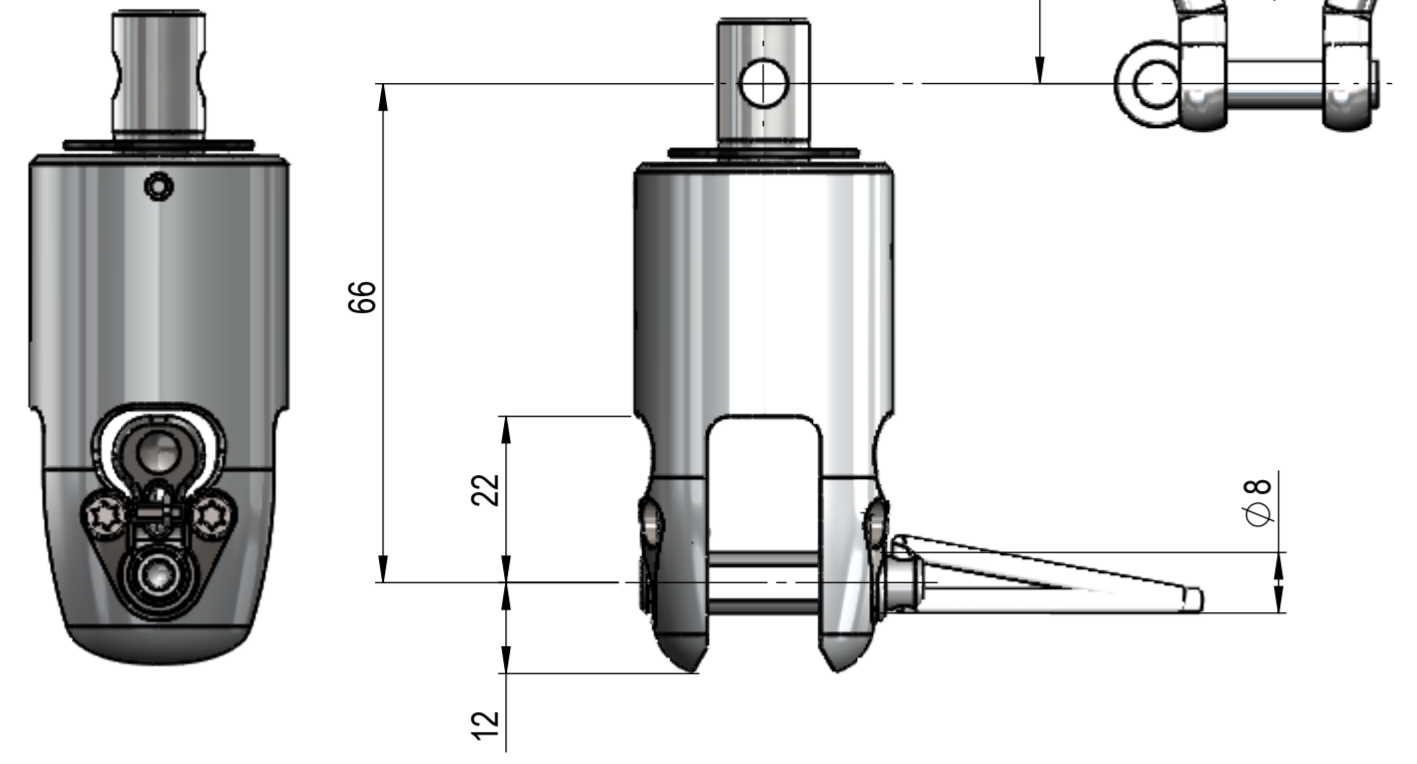


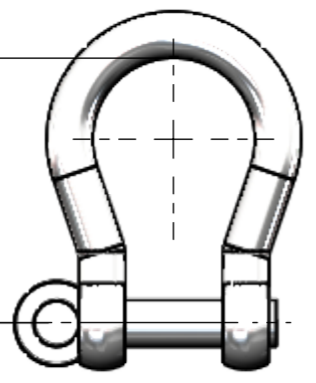
Émerillon / Swivel
43420101530

Poids / Weight : 151g

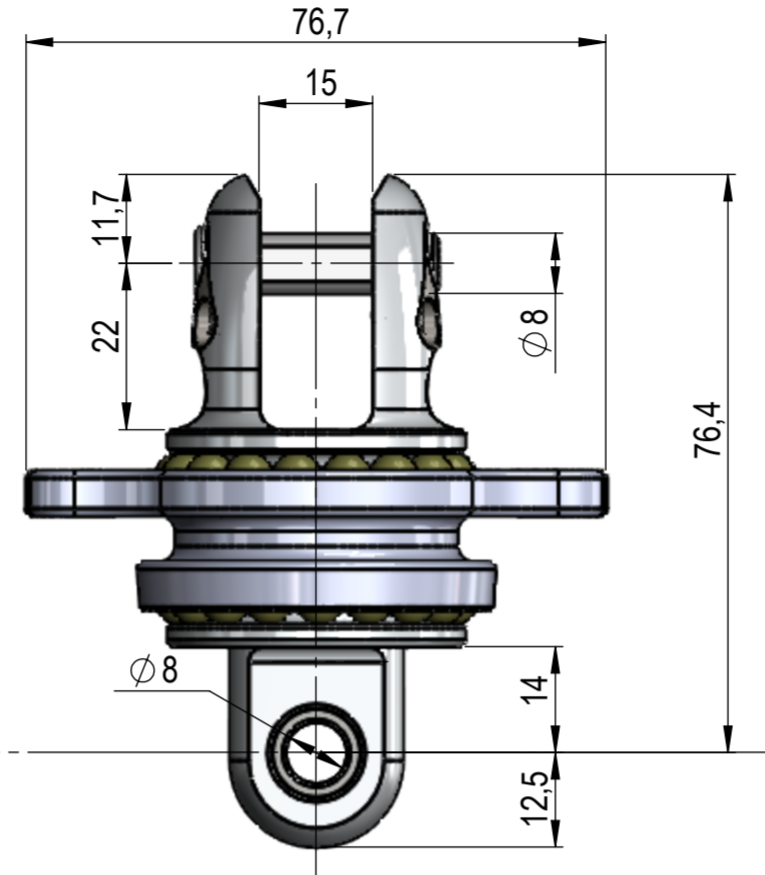


Manille Ø6HR / Ø6HR Shackle
31001260600

Poids / Weight : 31g

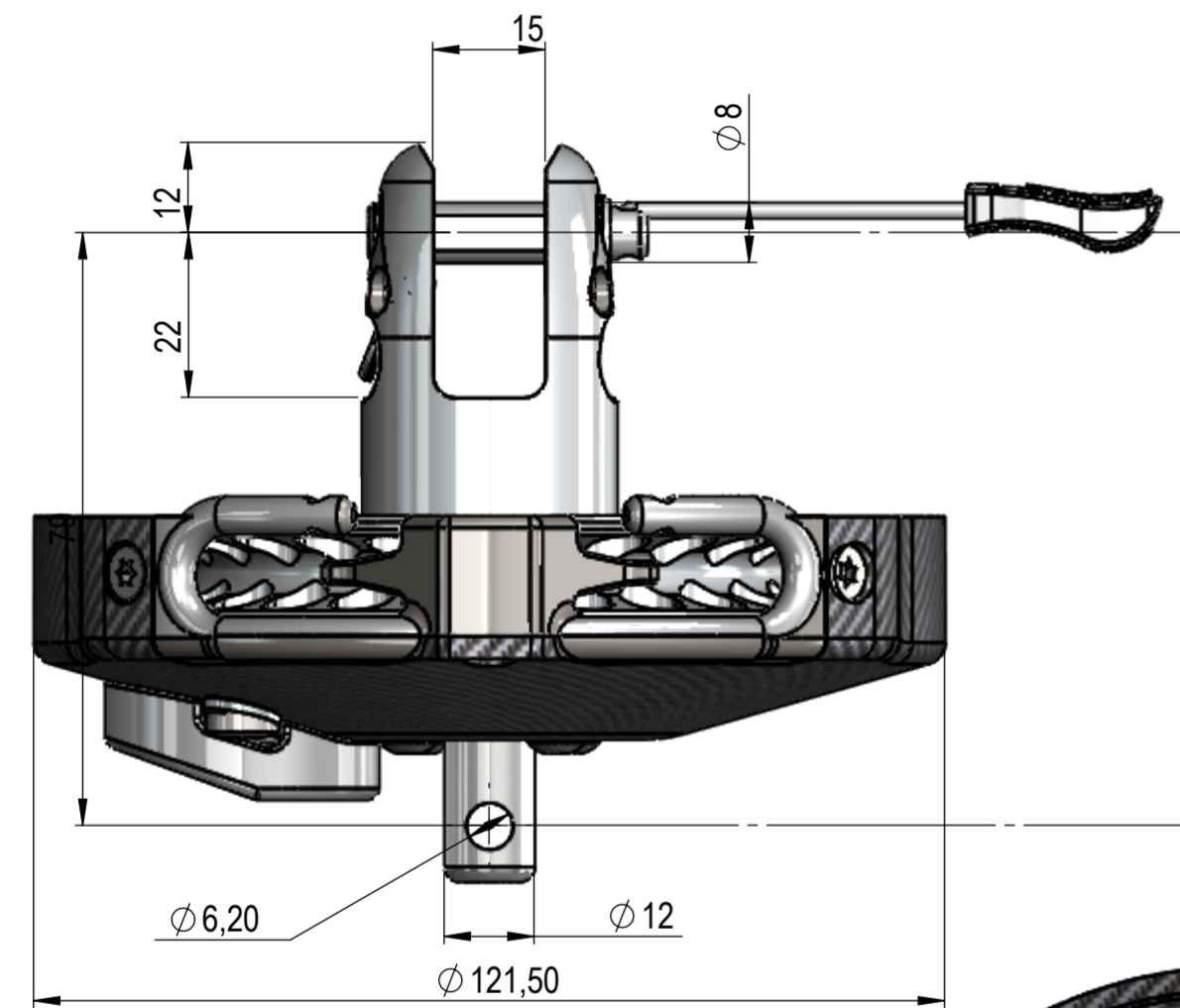
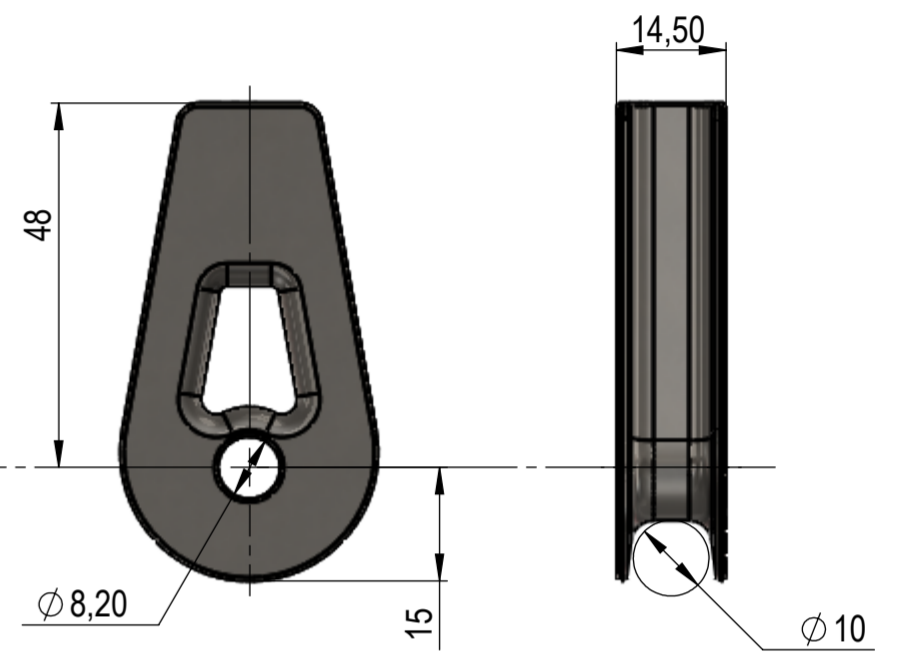
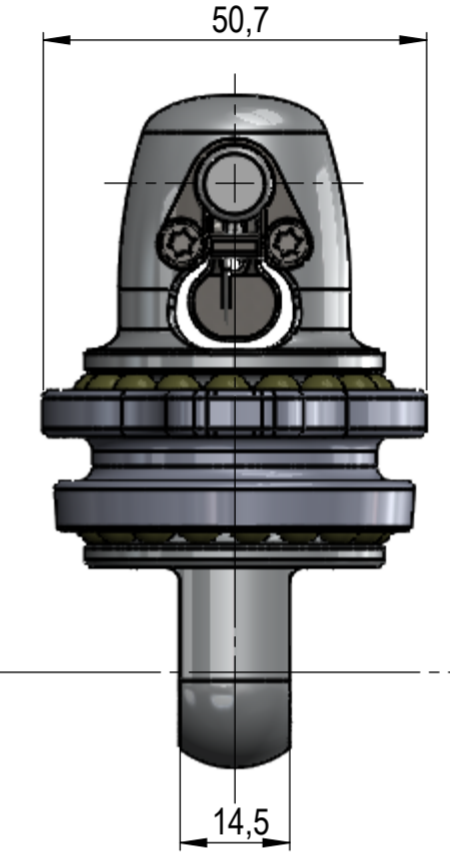


Cosse FAST 1500 / Thimble FAST 1500
43230001540
(fournie avec Loop / Supplied with Loop)
Poids / Weight : 222g



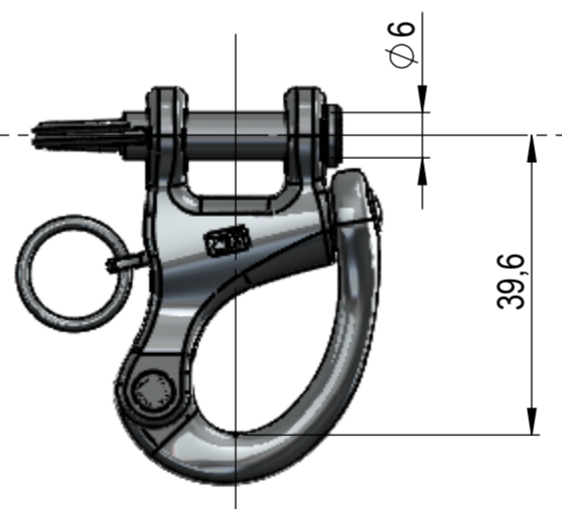
Cosse FCI 1500 / Standard Thimble FCI 1500
25200010110

Poids / Weight : 50g



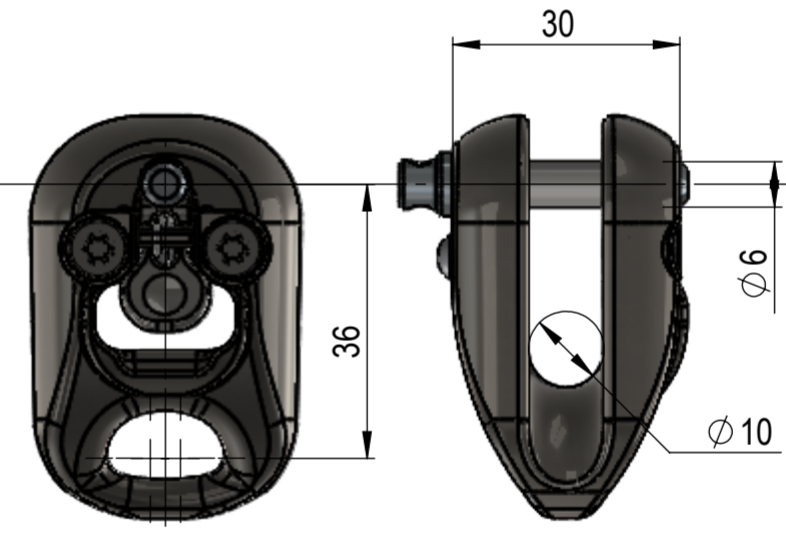
Poulie crantée / Endless line drum
43420201530

Poids / Weight : 413g



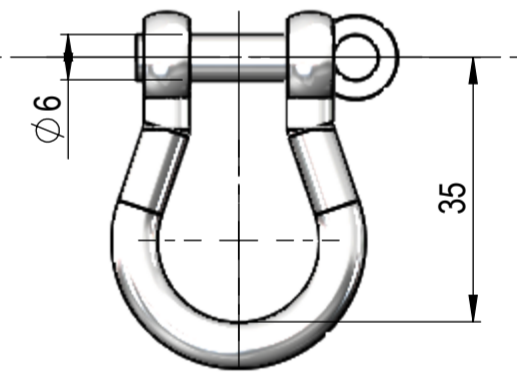
Mousqueton Ø6 / Ø6 Snapshackle
31003271200

Poids / Weight : 54g



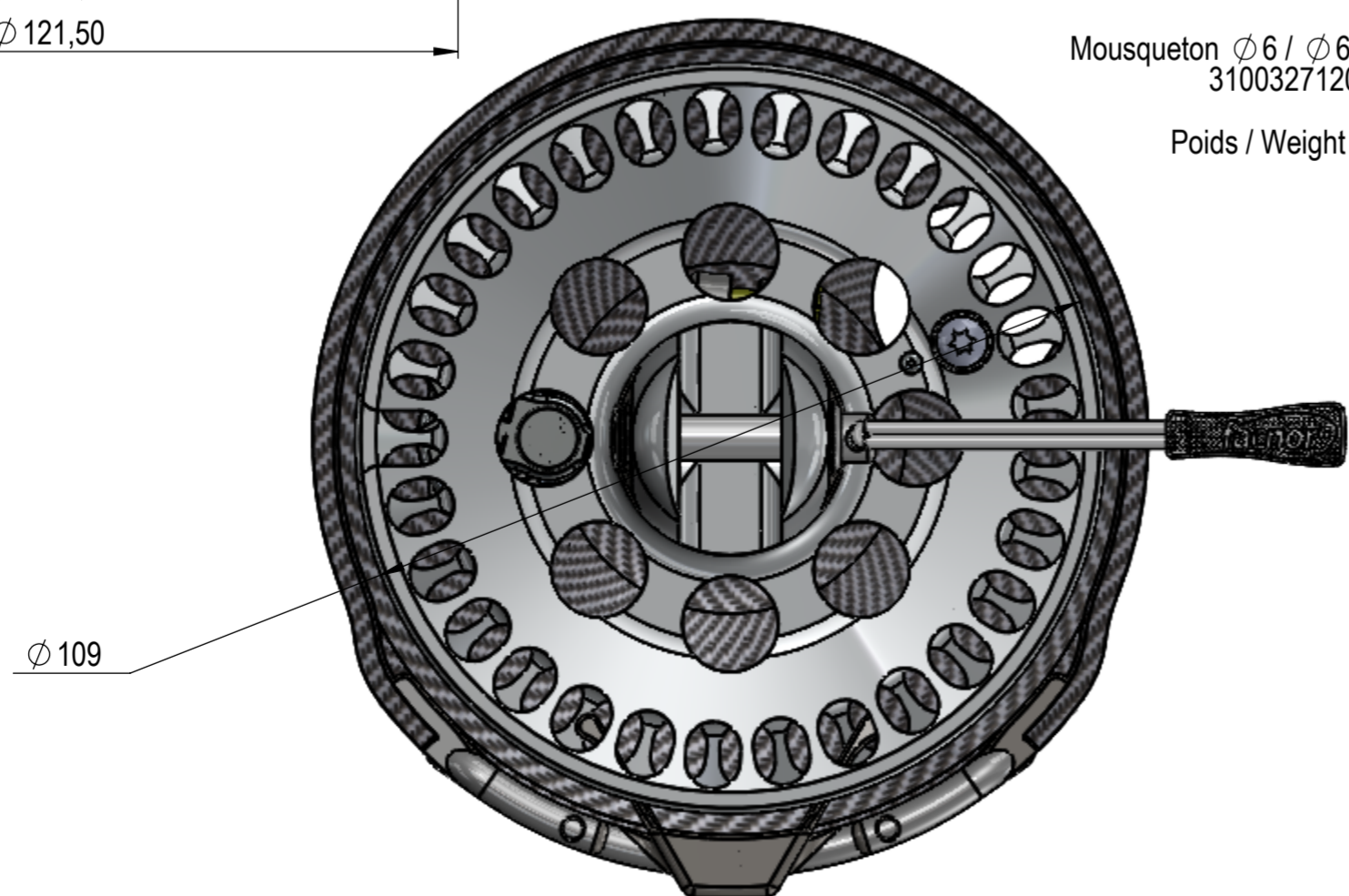
Palan de friction / Solid Sheave SSH+ 1500
43354320153

Poids / Weight : 173g



Manille Ø6HR / Ø6HR Shackle
31001260600

Poids / Weight : 31g



ECHELLE 1:1 / Full scale

REV.	DATE	AUTEUR	APPROUVE	DESCRIPTION
A	19/02/2020	CY		Mise à jour de l'ensemble.
				FX+1500 - Encombrement
				FX+1500 - Dimensions
Date:23/12/2014	Tol. Gén.:		Etude: 2014MF0	
Auteur: LLerat	Matière:			
Indice: (A)	Finition:			

A2

Ech: 1:1

FACNOR S.A.
Parc d'Activités - B.P. 222
F-50550 SAINT-VAAST-LA-HOUGUE
tel. +33 (0)2 33 88 50 22
fax. +33 (0)2 33 23 14 27

Ce plan est la propriété intellectuelle de FACNOR SA. Il ne peut être divulgué à des tiers sans notre autorisation écrite, ni servir à d'autres fabrications.