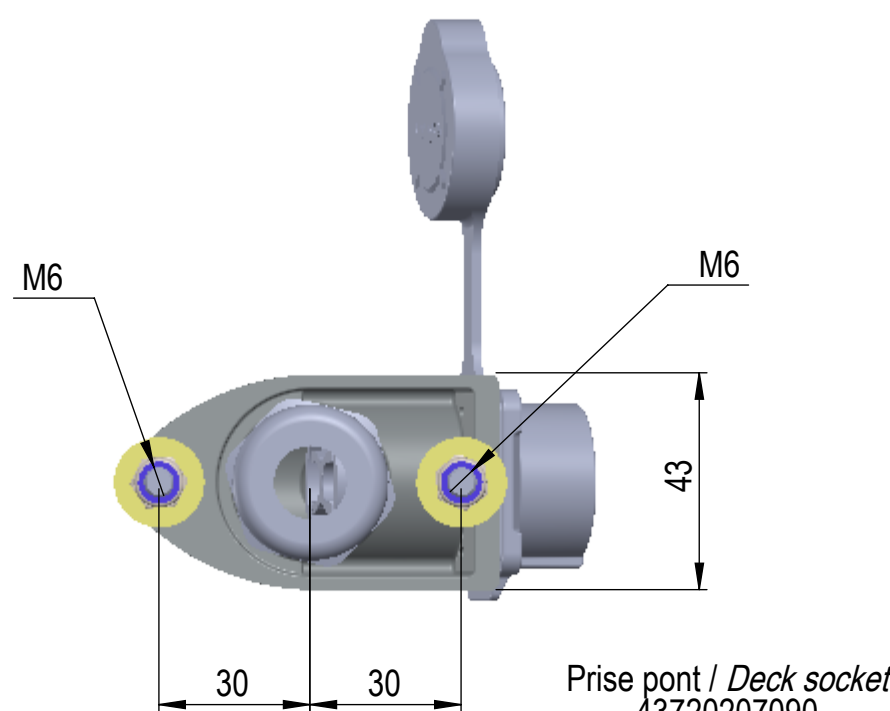
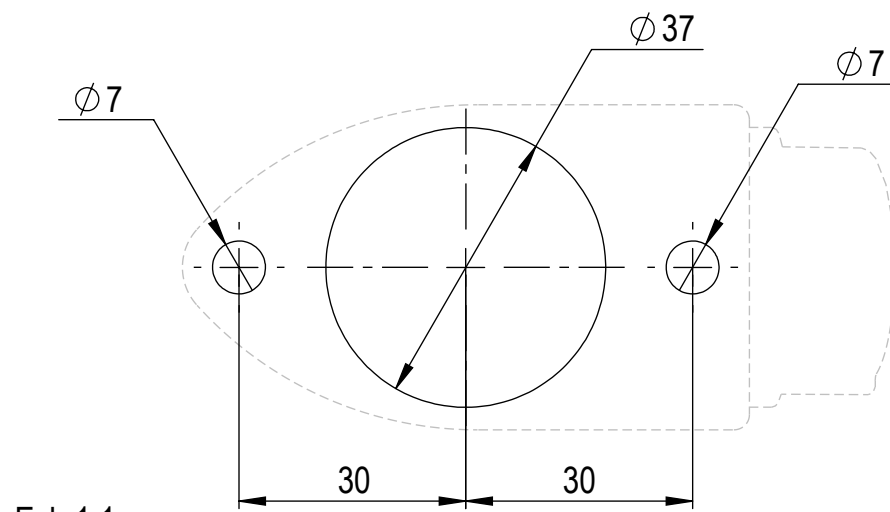


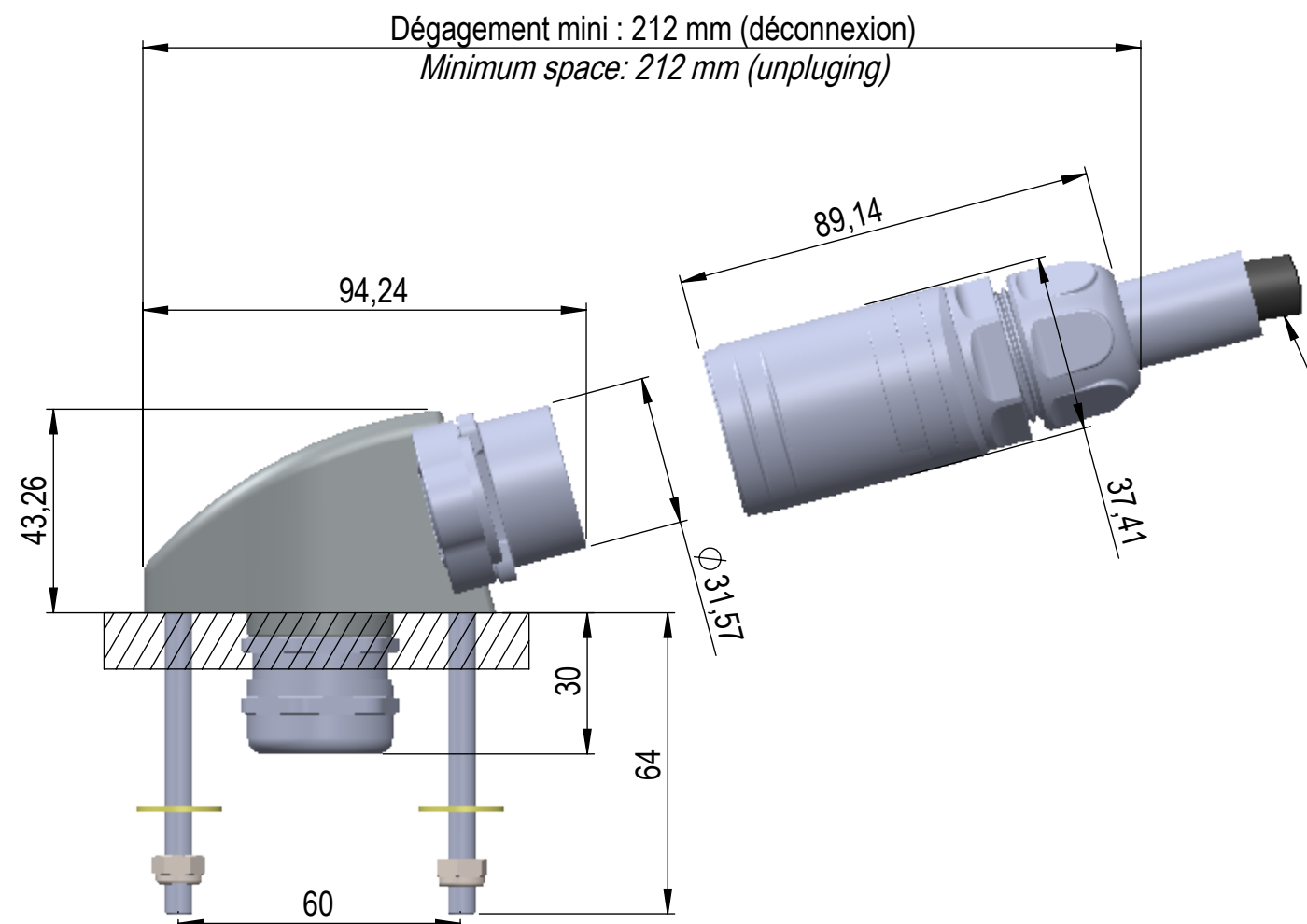
4 orientations possibles /  
4 possible positions  
0° - 90° - 180° - 270°

Gabarit de perçage pour la prise pont / Deck machining template

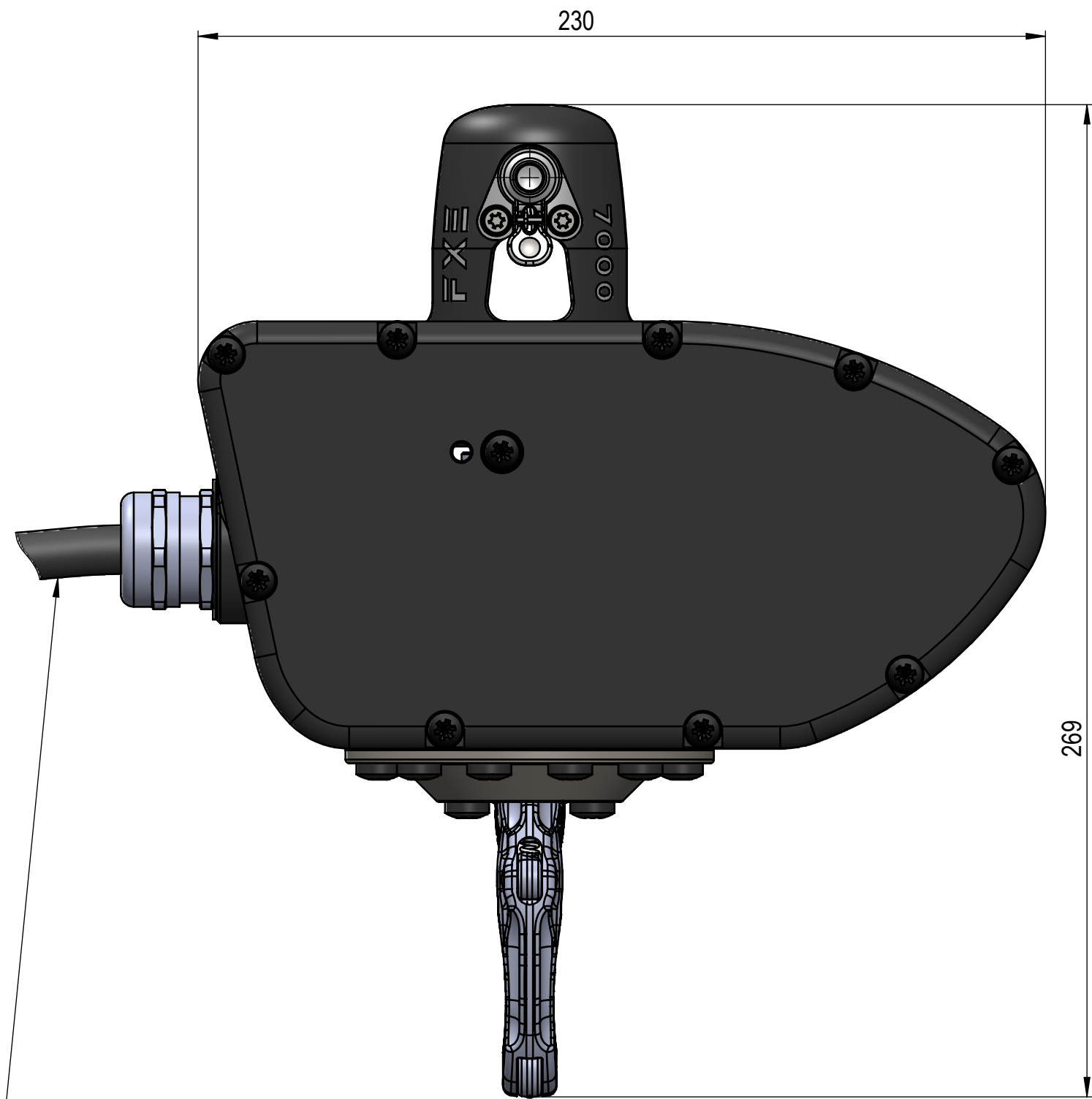


Prise pont / Deck socket  
43720207090

Poids / Weight :



Dégagement mini : 212 mm (déconnexion)  
Minimum space: 212 mm (unplugging)



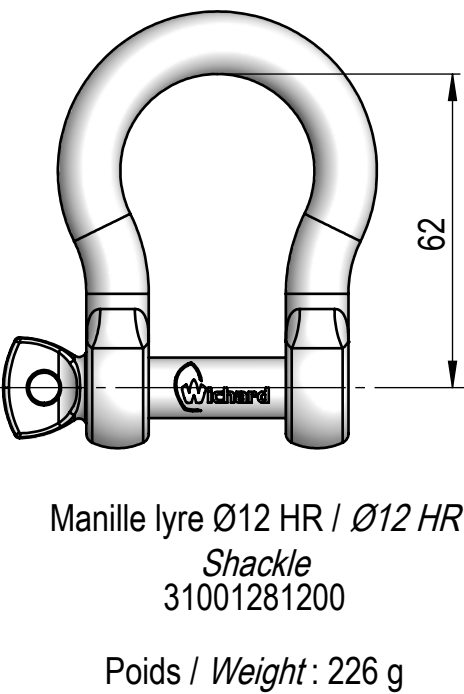
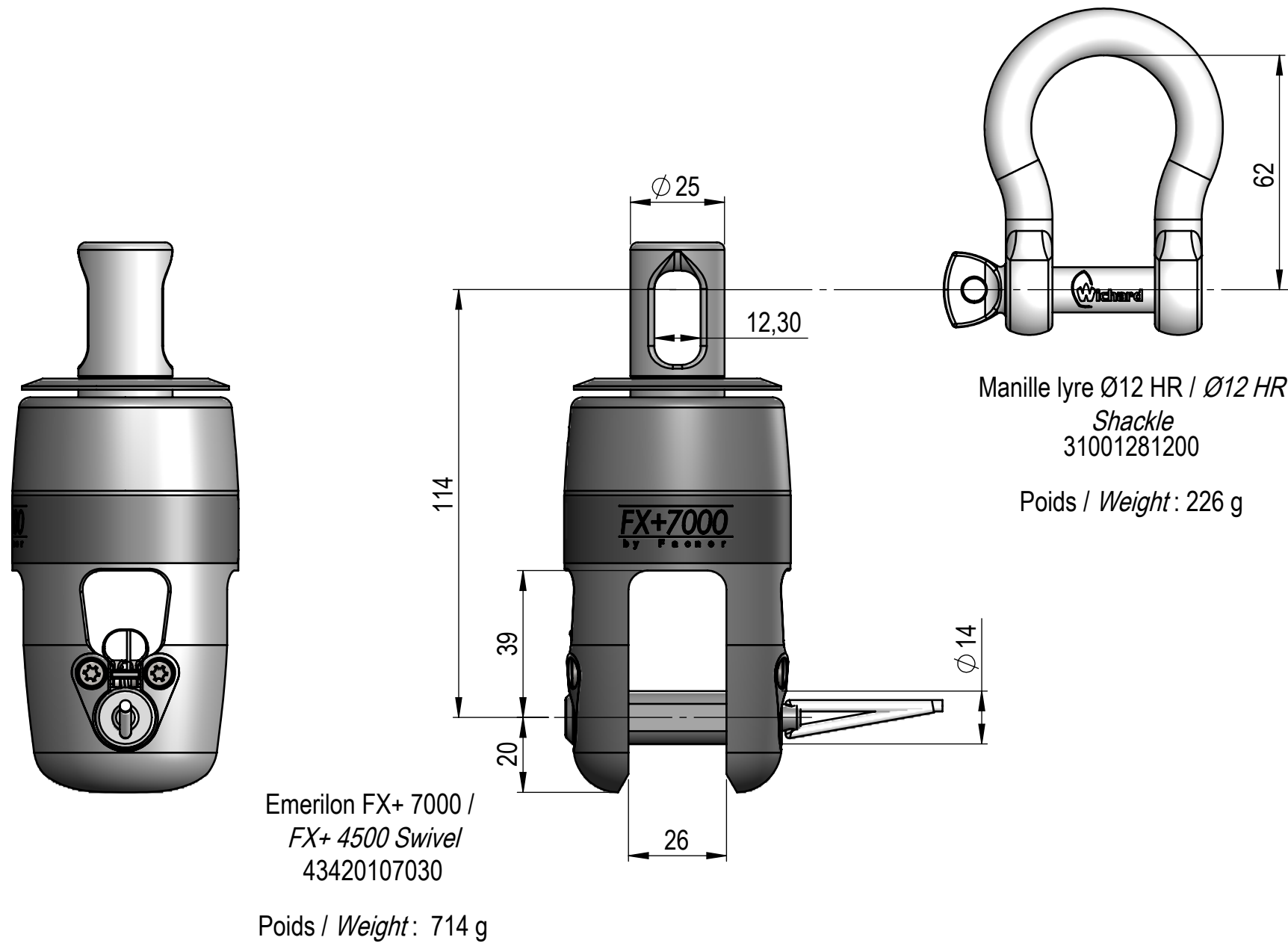
Bloc moteur FXE 7000 électrique /  
Electric drive unit FXE 7000  
12 V : 43720207030  
24 V : 43720207034

Poids / Weight :

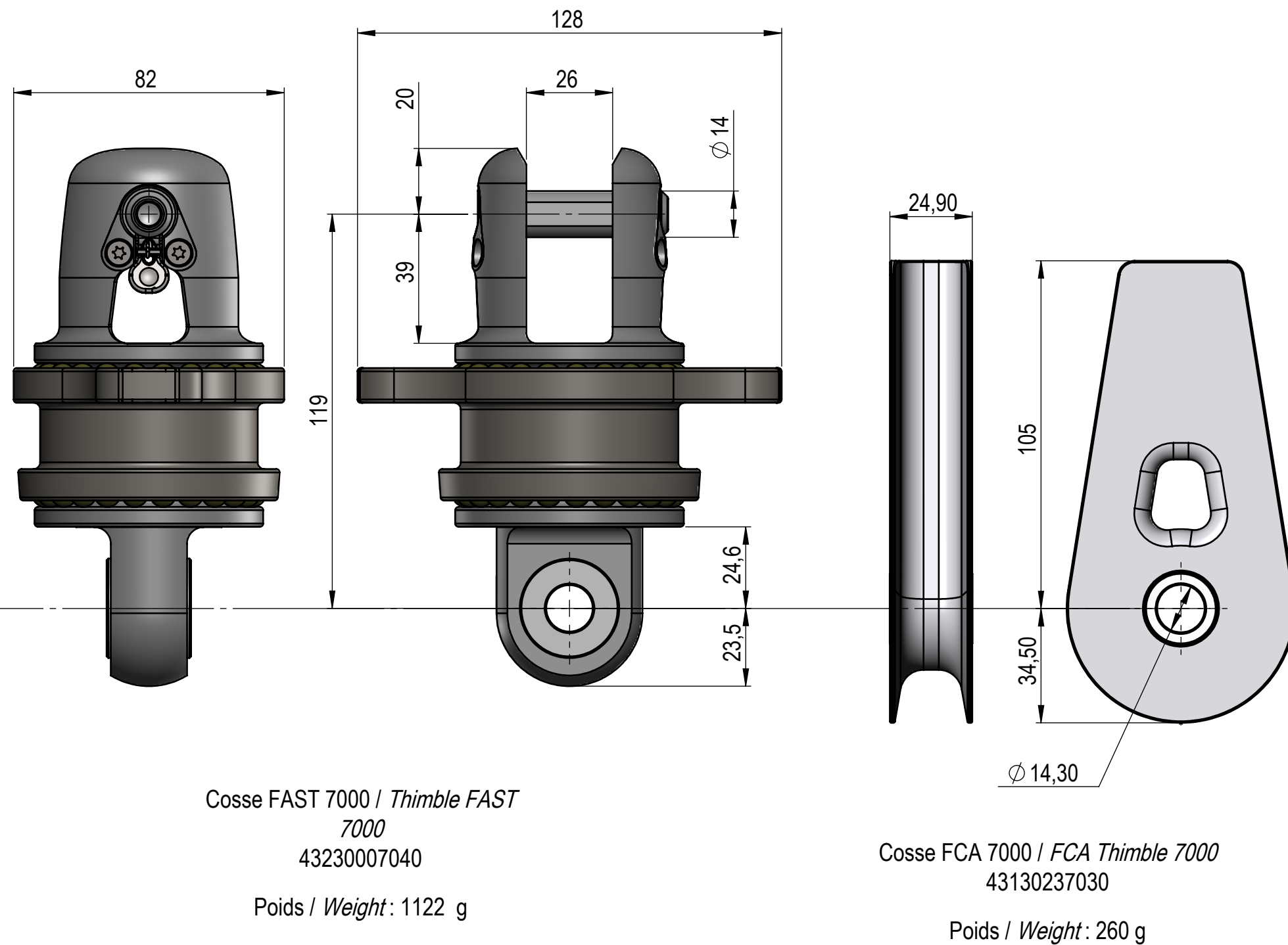
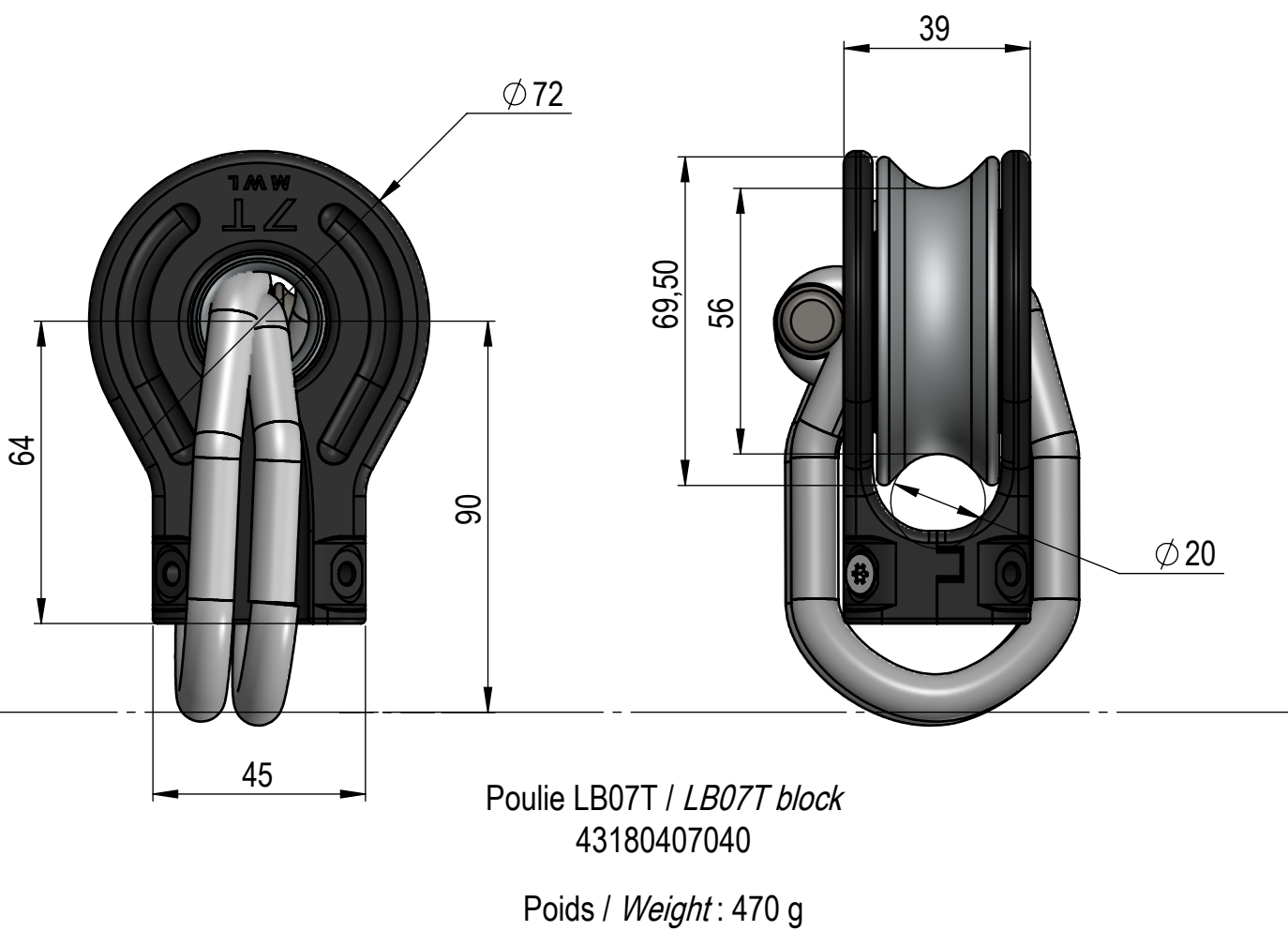
## KIT STANDARD

Comprend également / also included :

- 1x Housse de protection / Protection cover (29050000349)
- 1x Sac de rangement / Storage bag (29050000343)
- 1x Coffret relais Facnor 12-24V 50A / Facnor 50A Relay box 12-24V (56012000500)
- 12V : 1x Disjoncteur 60A / 60A Circuit breaker (56012000130)
- 24V : 1x Disjoncteur 30A / 30A Circuit breaker (56012000125)



## OPTIONS



Cosse FCA 7000 / FCA Thimble 7000  
43130237030  
Poids / Weight : 260 g

INFORMATIONS / INFORMATIONS	
PUISSANCE / POWER	800 W
ALIMENTATION / POWER SUPPLY	12 V / 24 V
SURFACE DE VOILE MAXI. / MAX. SAIL AREA	250 m²
VITESSE D'ENROULEMENT / FURLING SPEED	110 RPM

REV.	DATE	AUTEUR	APPROUVE	DESCRIPTION
				Emmagasineur FXE 7000 - Encombrement Code Sail Furler FXE 7000 - Dimensions
				Indice: A1
				Matière:
				Etat Final:
				Auteur: GBeuchet
				Date: 21/12/2022
				Tol.Gén.: ISO 2768-mK
				Ra.Gén.: √ <sup>RG</sup> 1,6 / √1
				Etude: 21122022GB01