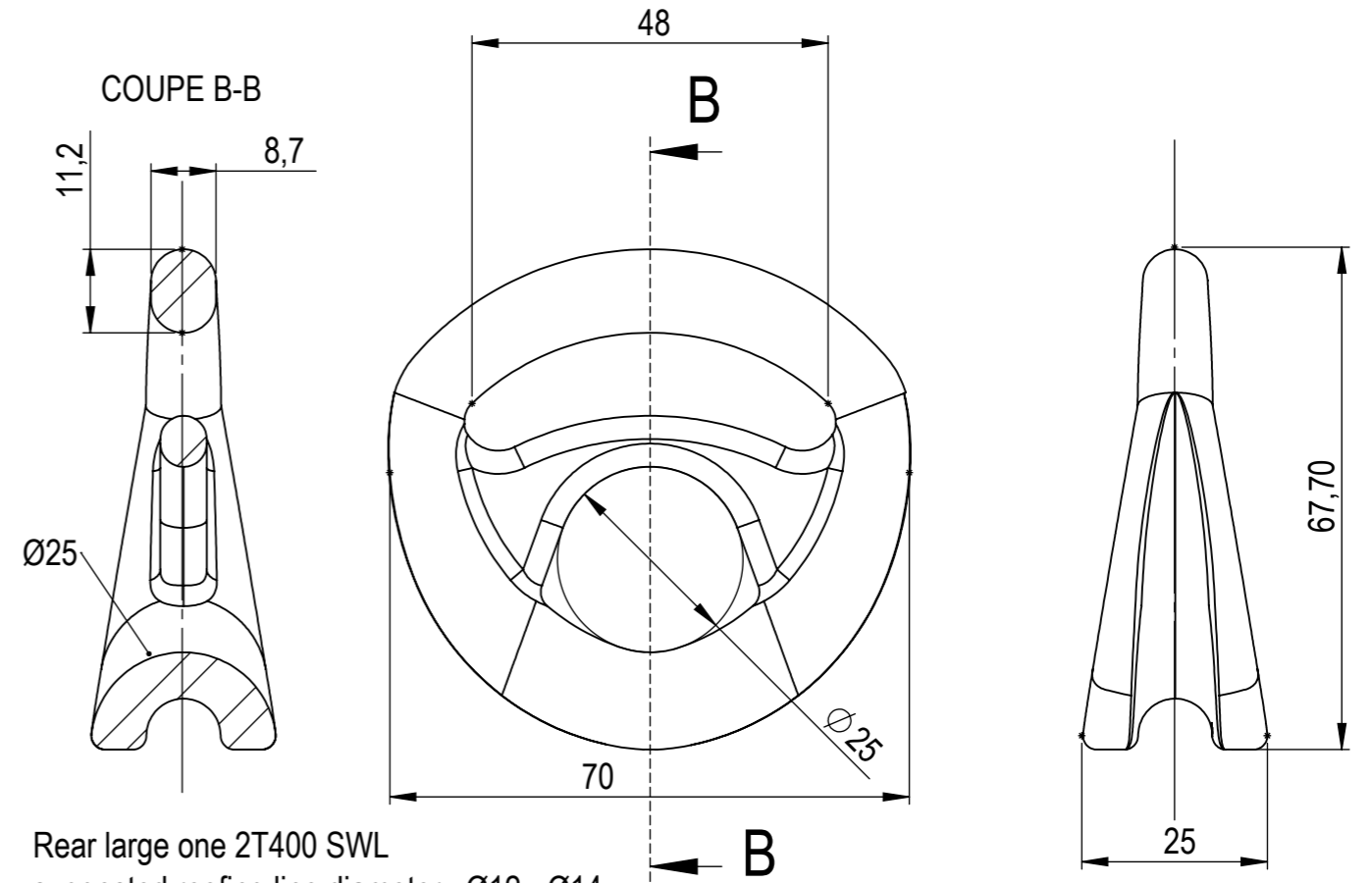


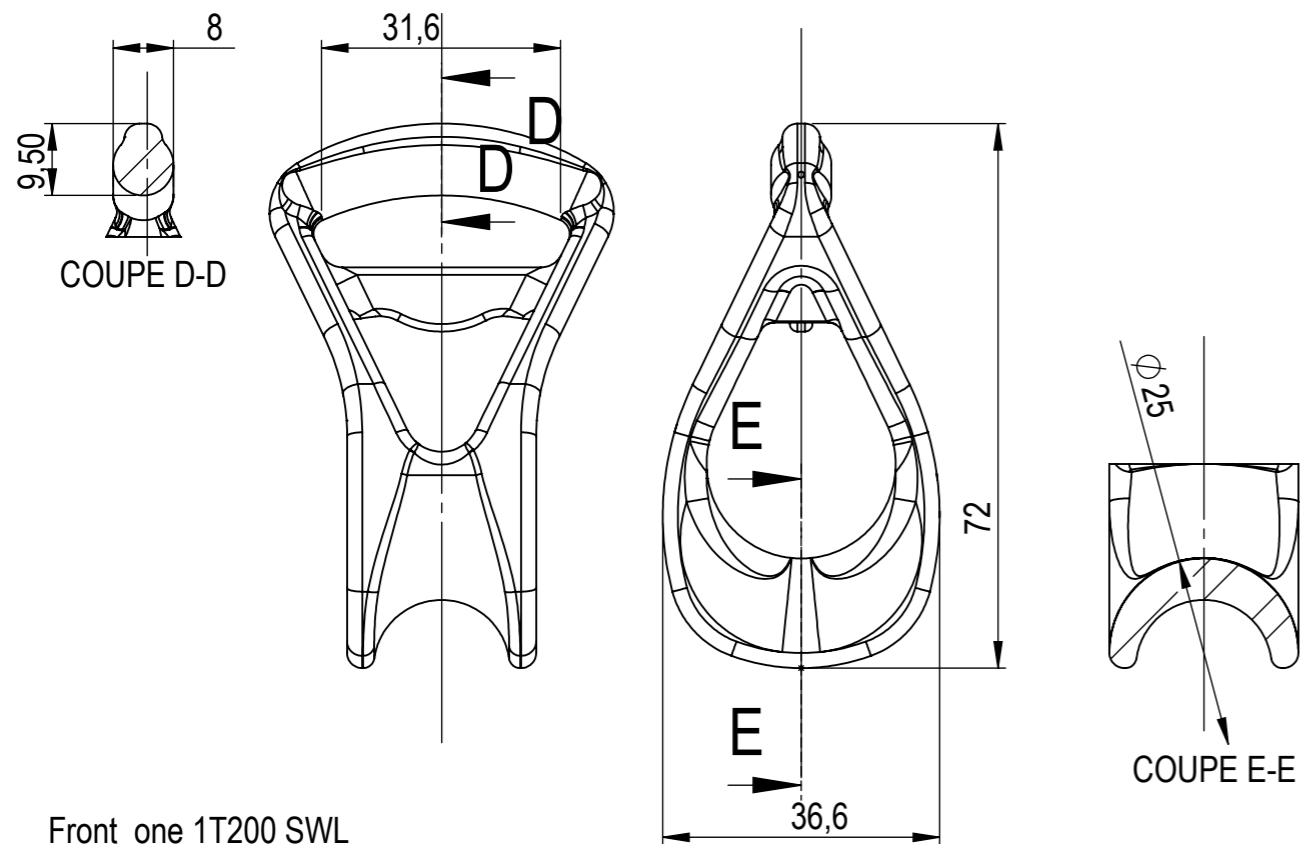
Rear small one 1T100 SWL  
 suggested reefing line diameter : Ø10 - Ø12  
 Part number:25200010200

Weight : 112g



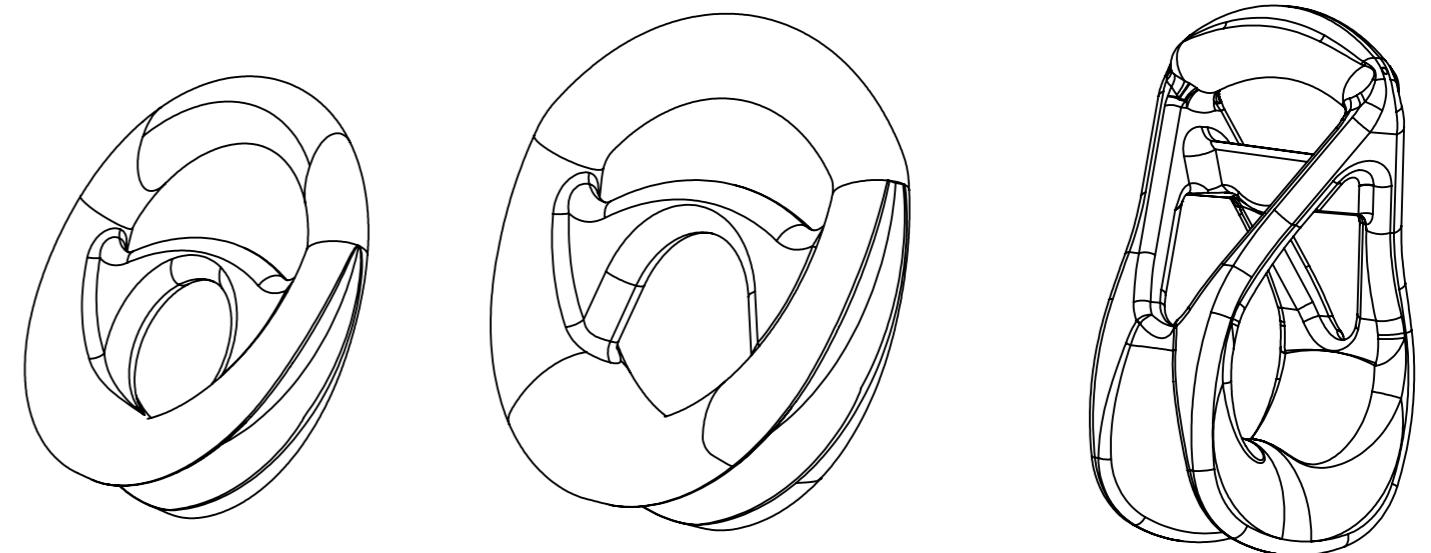
Rear large one 2T400 SWL  
 suggested reefing line diameter : Ø12 - Ø14  
 Part number:25200010210

Weight : 210g



Front one 1T200 SWL  
 suggested reefing line diameter : Ø10 - Ø12  
 Part number:25200010220

Weight : 123g



Rear small one 1T100 SWL

Rear large one 2T400 SWL

Front one 1T200 SWL

REV.	DATE	AUTEUR	APPROUVE	DESCRIPTION
<b>FRONT &amp; REAR MAINSAIL            SOFT REEFING RINGS</b>				 <b>A3</b> Ech: 1:1
Date: 12/12/2011		Tol. Gén.:		 FACNOR S.A. Parc d'Activités - B.P. 222 F-50550 SAINT-VAAST-LA-HOUGUE tel. +33 (0)2 33 88 50 22 fax. +33 (0)2 33 23 14 27
Auteur: P.Lanéelle		Matière: A4 - SS 316		
Indice:		Finition: Poli manuel		
Etude: 09102013PL01			Usiné: Repris: PoliM:	
Ce plan est la propriété intellectuelle de FACNOR SA. Il ne peut être divulgué à des tiers sans notre autorisation écrite, ni servir à d'autres fabrications.				